



MONTHLY MEMBERSHIP PROGRESS REPORT

District 11 E2

Results as of: 11/30/2015

GMT: THOMAS MATNEY

LOCATION MICHIGAN

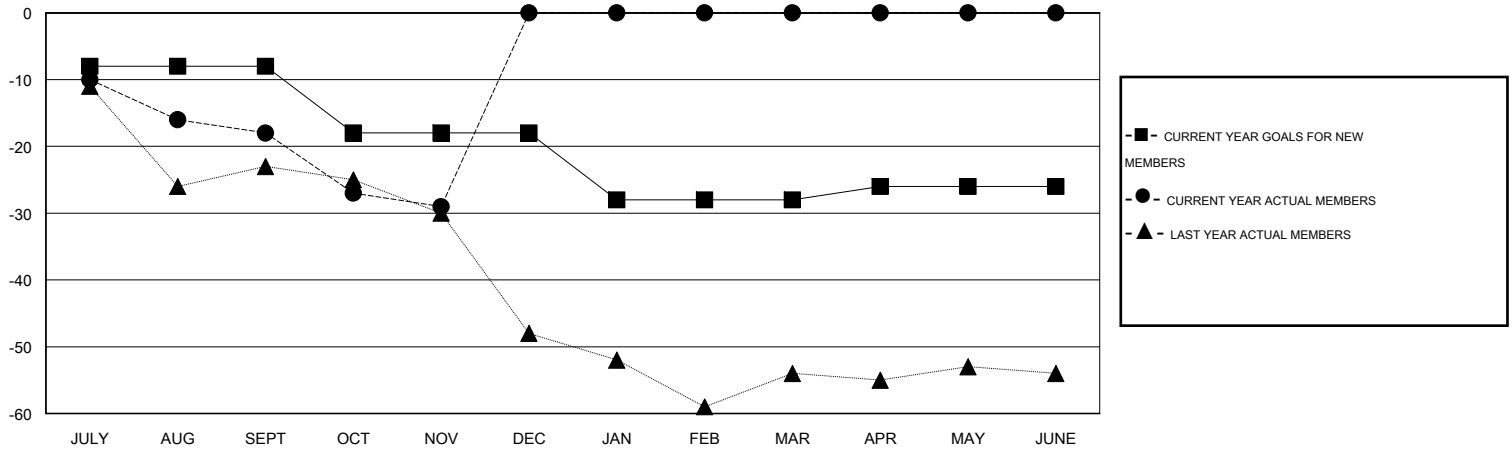
GMT CA 1

Clubs					Members				
RESULTS FOR 2015-2016					RESULTS FOR 2015-2016				
QUARTER	NEW CLUB GOAL	NEW CLUBS	DROPPED CLUBS	NET GAIN/LOSS	QUARTER	NEW MEMBER GOAL	CHARTER AND NEW MEMBERS ADDED	DROPPED MEMBERS	NET GAIN/LOSS
JULY/AUG/SEPT	0	0	1	-1	JULY/AUG/SEPT	-8	17	35	-18
OCT/NOV/DEC	0	0	0	0	OCT/NOV/DEC	-10	9	20	-11
JAN/FEB/MAR	0	0	0	0	JAN/FEB/MAR	-10	0	0	0
APR/MAY/JUNE	1	0	0	0	APR/MAY/JUNE	2	0	0	0

GOALS AND ACTUAL NEW CLUBS CUMULATIVE



GOALS AND ACTUAL MEMBERS CUMULATIVE



DROPPED CLUBS: 1	16 CLUBS OF 36 ADDED 1 OR MORE NEW MEMBERS	GENDER DISTRIBUTION
		MALE 803 (75.83%)
		FEMALE 256 (24.17%)
DROPPED MEMBERS	CLICK HERE FOR HEALTH ASSESSMENT DATA	FAMILY UNIT MEMBERS 147
DECEASED 7		HEAD OF HOUSEHOLD 73
CLUB CANCELLED 0		NON-HEAD OF HOUSEHOLD 74
OTHER 48		
TOTAL 55		